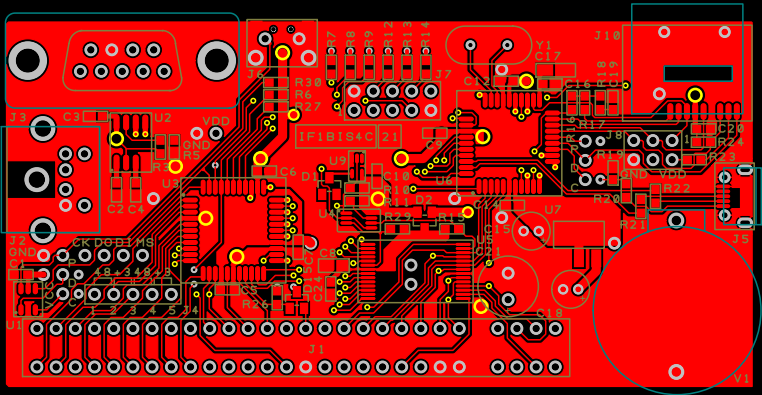
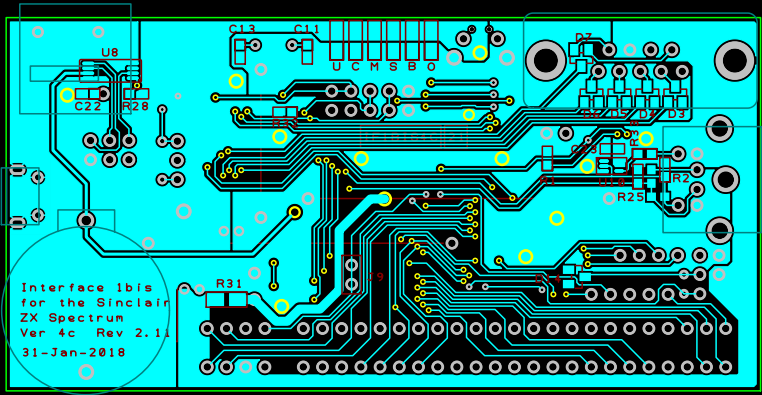
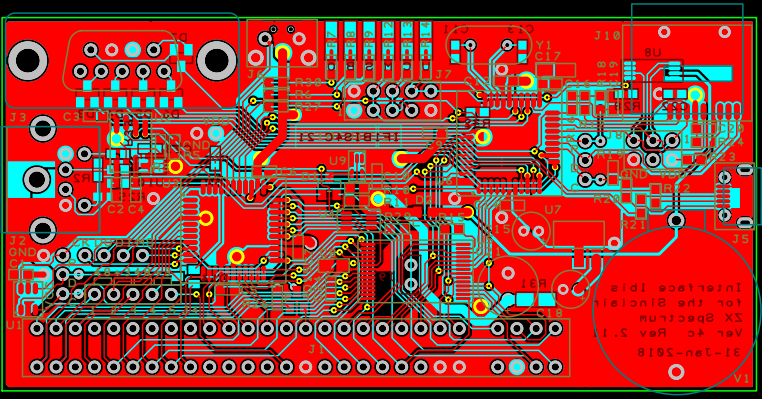


Projection Do Not Scale		Project Interface 1bis for the Sinclair ZX Spectrum
Client		Title Version 4c
Filename		Rev 2.11
		Date 8-Aug-2017
		Sheet 1 of 1





Interface 1bis
for the Sinclair
ZX Spectrum
Ver 4c Rev 2.11
31-Jan-2018



Interface Ibis
for the Sinclair
ZX Spectrum
Ver 4c Rev 2.1
31-Jan-2018

Report Written: Monday, February 19, 2018
 Project Path: F:\ZXS\DES\F1b\4\c\DSP\F1BI S4C. prj
 Design Path: F:\ZXS\DES\F1b\4\c\DSP\F1BI S4C. pcb
 Design Title:
 Created: 2012/10/19 18: 07: 35
 Last Saved: 2018/02/19 00: 08: 34
 Editing Time: 43344 min
 Units: mm (precision 3)

C1	Capacitor ceramic chip	0603	100nF	Kemet	C0603C104Z3VACTU	264-4646
C2	Capacitor ceramic chip	0603	100nF	Kemet	C0603C104Z3VACTU	264-4646
C3	Capacitor ceramic chip	0603	100nF	Kemet	C0603C104Z3VACTU	264-4646
C4	Capacitor ceramic chip	0603	1uF	Phycomp	2238 246 19863	435-1403
C5	Capacitor ceramic chip	0603	100nF	Kemet	C0603C104Z3VACTU	264-4646
C6	Capacitor ceramic chip	0603	100nF	Kemet	C0603C104Z3VACTU	264-4646
C7	Capacitor ceramic chip	0603	100nF	Kemet	C0603C104Z3VACTU	264-4646
C8	Capacitor ceramic chip	0805	10uF	Murata	GRM21BC81C106KA73L	820-2752
C9	Capacitor ceramic chip	0603	100nF	Kemet	C0603C104Z3VACTU	264-4646
C10	Capacitor ceramic chip	0603	100nF	Kemet	C0603C104Z3VACTU	264-4646
C11	Capacitor ceramic chip	0603	22pF	TDK	C1608COG1H220J080AA	788-2947
C12	Capacitor ceramic chip	0603	100nF	Kemet	C0603C104Z3VACTU	264-4646
C13	Capacitor ceramic chip	0603	22pF	TDK	C1608COG1H220J080AA	788-2947
C14	Capacitor ceramic chip	0603	100nF	Kemet	C0603C104Z3VACTU	264-4646
C15	Capacitor aluminum	D50-P20	100uF	RS	711-0930	711-0930
C16	Capacitor ceramic chip	0603	100nF	Kemet	C0603C104Z3VACTU	264-4646
C17	Capacitor tantalum	3216-18	10uF	Vishay	T491A106K006AT	801-5401
C18	Capacitor aluminum	D50-P20	22uF	RS	711-0915	711-0915
C19	Capacitor ceramic chip	0603	100nF	Kemet	C0603C104Z3VACTU	264-4646
C20	Capacitor ceramic chip	0603	100nF	Kemet	C0603C104Z3VACTU	264-4646
C21	Capacitor aluminum	D80-P35	470uF	RS	711-0826	711-0826
C22	Capacitor ceramic chip	0603	100nF	Kemet	C0603C104Z3VACTU	264-4646
C23	Capacitor ceramic chip	0603	100nF	Kemet	C0603C104Z3VACTU	264-4646
C24	Capacitor ceramic chip	0603	100nF	Kemet	C0603C104Z3VACTU	264-4646
D1	Schottky double diode	SOT23-3	BAT54A	ST	BAT54A	486-4498
D2	Schottky double diode	SOT23-3	BAT54C	ON Semi	BAT54CLT1G	781-3923
D3	Schottky diode	SOT23-3	BAT54	Zetex	BAT54-7-F	738-4829
D4	Schottky diode	SOT23-3	BAT54	Zetex	BAT54-7-F	738-4829
D5	Schottky diode	SOT23-3	BAT54	Zetex	BAT54-7-F	738-4829
D6	Schottky diode	SOT23-3	BAT54	Zetex	BAT54-7-F	738-4829
D7	Schottky double diode	SOT23-3	BAT54A	ST	BAT54A	486-4498
D8	Light emitting diode	3216	Red	Kingbright	KP-3216SRC-PRV	466-3914
D9	Light emitting diode	3216	Red	Kingbright	KP-3216SRC-PRV	466-3914
D10	Light emitting diode	3216	Red	Kingbright	KP-3216SRC-PRV	466-3914
D11	Light emitting diode	3216	Red	Kingbright	KP-3216SRC-PRV	466-3914
D12	Light emitting diode	3216	Red	Kingbright	KP-3216SRC-PRV	466-3914
D13	Light emitting diode	3216	Red	Kingbright	KP-3216SRC-PRV	466-3914
D14	Schottky double diode	SOT23-3	BAT54C	ON Semi	BAT54CLT1G	781-3923
D15	Schottky double diode	SOT23-3	BAT54C	ON Semi	BAT54CLT1G	781-3923
J1	Receptacle edge	TH	56-way	Cinch	50-31SNL-XTF	403-796
J2	Receptacle mini-DIN	PCB	6-way	TE Conn	5749180-1	710-0441
J3	Plug SUB-D	PCB	9-way	Amphenol	L717TSEH09POL2RM5	691-8786
J4	Pin header	SIL	5-way	RS	W81103T3825RC	251-8092
J5	Receptacle micro-USB	PCB		Mol ex	105017-0001	848-6764
J6	Tactile switch	TH		Alps	SKHHLMA010	758-1985
J7	Pin header	DIL	10-way	FCI	77313-101-08LF	673-7512

J8	Pin header	DIL	6-way	RS	W82106T3825RC	251-8137
J9	Pin header	SIL	2-way	RS	W81102T3825RC	251-8086
J10	Receptacle micro-SDC	PCB		Hi rose	DM3AT-SF-PEJM5	828-1884
R1	Resistor chip	0603	10K	Bourns	CRO603-JW-103GLF	740-8892
R2	Resistor chip	0603	10K	Bourns	CRO603-JW-103GLF	740-8892
R3	Resistor chip	0603	1K	Vi shay	CRCW06031K00FKEA	678-9875
R5	Resistor chip	0603	10K	Bourns	CRO603-JW-103GLF	740-8892
R6	Resistor chip	0603	10K	Bourns	CRO603-JW-103GLF	740-8892
R7	Resistor chip	0603	220R	Vi shay	CRCW0603220RJNEA	832-3152
R8	Resistor chip	0603	220R	Vi shay	CRCW0603220RJNEA	832-3152
R9	Resistor chip	0603	220R	Vi shay	CRCW0603220RJNEA	832-3152
R10	Resistor chip	0603	10K	Bourns	CRO603-JW-103GLF	740-8892
R11	Resistor chip	0603	10K	Bourns	CRO603-JW-103GLF	740-8892
R12	Resistor chip	0603	1K	Vi shay	CRCW06031K00FKEA	678-9875
R13	Resistor chip	0603	1K	Vi shay	CRCW06031K00FKEA	678-9875
R14	Resistor chip	0603	1K	Vi shay	CRCW06031K00FKEA	678-9875
R15	Resistor chip	0603	10K	Bourns	CRO603-JW-103GLF	740-8892
R16	Resistor chip	0603	10K	Bourns	CRO603-JW-103GLF	740-8892
R17	Resistor chip	0603	47K	Vi shay	CRCW060347K0FKEA	679-0425
R18	Resistor chip	0603	10K	Bourns	CRO603-JW-103GLF	740-8892
R19	Resistor chip	0603	2K	Bourns	CRO603-FX-2001ELF	740-8836
R20	Resistor chip	0603	1K	Vi shay	CRCW06031K00FKEA	678-9875
R21	Resistor chip	0603	OR	TE Conn	CRG0603ZR	213-1982
R22	Resistor chip	0603	OR	TE Conn	CRG0603ZR	213-1982
R23	Resistor chip	0603	47K	Vi shay	CRCW060347K0FKEA	679-0425
R24	Resistor chip	0603	10K	Bourns	CRO603-JW-103GLF	740-8892
R25	Resistor chip	0603	10K	Bourns	CRO603-JW-103GLF	740-8892
R26	Resistor chip	0603	10K	Bourns	CRO603-JW-103GLF	740-8892
R27	Resistor chip	0603	10K	Bourns	CRO603-JW-103GLF	740-8892
R28	Resistor chip	0603	10K	Bourns	CRO603-JW-103GLF	740-8892
R29	Resistor chip	0603	10K	Bourns	CRO603-JW-103GLF	740-8892
R30	Resistor chip	0603	10K	Bourns	CRO603-JW-103GLF	740-8892
R31	Resistor chip	1206	2R	Panasoni c	ERJ8GEYJ2ROV	812-7147
R32	Resistor chip	0603	10K	Bourns	CRO603-JW-103GLF	740-8892
R33	Resistor chip	0603	220R	Vi shay	CRCW0603220RJNEA	832-3152
U1	MCU 8-bit	SOT23-6	PI C10F320	Mi crochi p	PI C10F320T-I /OT	755-9408
U2	Volt Supervisor 5V	S01C8	Texas	Texas	TL7705AIDRG4	662-4113
U3	CPLD 36-macrocell	TQFP44	XC9536XL10	Xi l i nx	XC9536XL10VQG44C	626-0652
U4	Dual 3-state buffer	DCT	74LVC2G125	Texas	74LVC2G125DCTRG4	662-6673
U5	SRAM 32Kx8	TSOP28	CY62256	Cypress	CY62256NLL-55ZXI	827-2565
U6	MCU 8-bit	TQFP44	PI C18F46J53	Mi crochi p	PI C18F46J53-I /PT	704-7700P
U7	Volt regulator 3.3V	SOT223	1117-3.3	ON Semi	NCP1117LPST33T3G	802-2137
U8	SRAM 1024Kx1	TSSOP	23LCV1024	Mi crochi p	23LCV1024-I /ST	803-2190
U9	Inverter ST	TSOP5	74LVC1G14	NXP	74LVC1G14GW, 125	510-392
U10	Inverter ST	TSOP5	74LVC1G14	NXP	74LVC1G14GW, 125	510-392
V1	Coin Battery	TH	20mm	Keystone	106	430-675
Y1	Crystal	HC49S	12MHz	Quantec	QCL12.0000F18B23B	814-9425